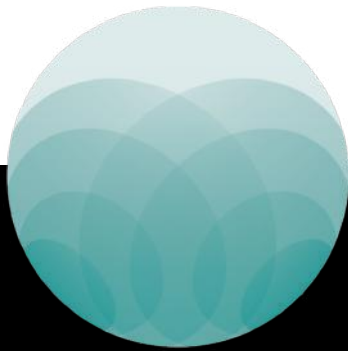




# easyroot



# WHAT IS THE TECHONOLOGY BEHIND THE EASYROOT?



1. 5.000G's of acceleration.
2. Magnetic-dynamic thrust.
3. Advanced electronic controller that allows the doctor to easily control the forces with simple turn of a dial.

Osseotouch's solution to more conservative and atraumatic dentistry was designing Easyroot, using the new Magnetic-dynamic technology.

It is a big step forward compared to manual instruments .

## 01

### CONSERVATIVE

It moves, replaces, re-shapes and condenses the bone. It never removes the bone, leaving soft tissues untouched.

## 02

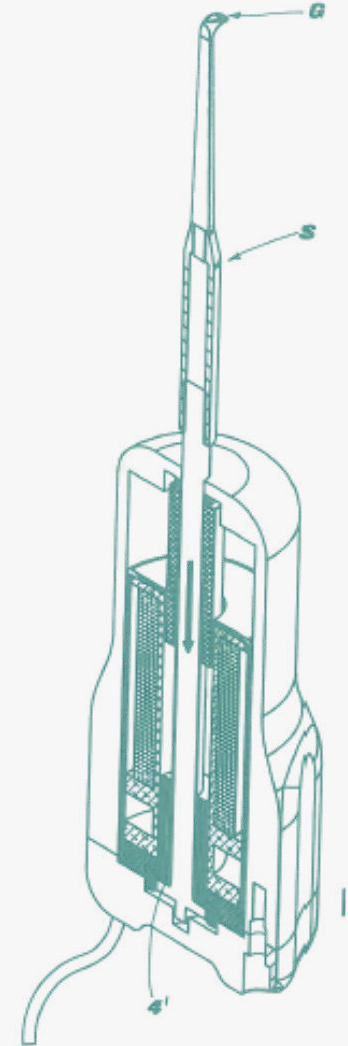
### SPEED

The Magnetic-dynamic impulse delivers much more force than manual tools. This means increased effectiveness during a procedure.

## 03

### PRECISION

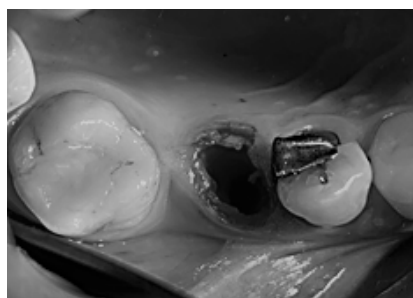
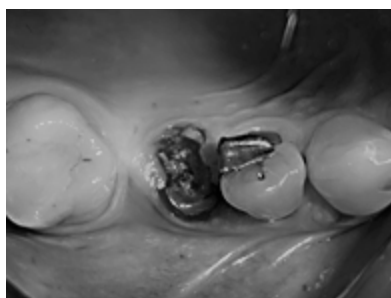
The kinetic energy forces are delivered precisely to the treatment area limiting dispersion to the craniofacial mass. This level of precision provides more comfort for the patient during the procedure.





“More complex extractions become simpler thanks to the magneto-dynamic impulse and dedicated inserts.”

**Dr. Stefano Lombardo,**  
Italy.



“Thanks to Easyroot the concept of atraumatic extraction is realized, with absolute absence of discomfort for the patient.”

**Dr. Franco Motta,**  
Italy.



## STARTER KIT



### EZ EXTR1

EXTRACTOR 1  
Sharp and durable



### EZ EXTR2

EXTRACTOR 2  
Reduced height and concave profile



### EXPELL

EXPELLER  
Double inclination



All extractors are 11mm off-set for better access to posterior regions

## OPTIONAL KIT



### EZ EXTR3

EXTRACTOR 3  
Total height - Concave profile



### EZ EXTR4

EXTRACTOR 4  
3rd Molars luxation - Thin lever



### EZ EXTR5

EXTRACTOR 5  
3rd Molars luxation - Thick lever



CLINICAL CASES



INSTRUMENTS  
DIMENSIONS



Meta Ergonomica, located in Turbigo (Milan), Italy, has developed and patented the use of Magnetic-dynamic forces in oral surgery. Its mission is to design and manufacture medical devices that allow implementation of procedures in controlled, precise and conservative manner.

Meta Ergonomica is ISO13485:2016 certified by Tuv Rheinland S.r.l. (1936).



Management System  
EN ISO  
13485:2016

www.tuv.com  
ID 9105068970



**META ERGONOMICA - MANUFACTURER**

Via Monte Nero, 19  
20029 TURBIGO (MI) - ITALIA

**OSSEOTOUCH - DISTRIBUTOR**

Piazza Garibaldi, 9  
21013 GALLARATE (VA) - ITALIA  
Tel +39 0331 1535586  
[www.osseotouch.com](http://www.osseotouch.com)  
[contact@osseotouch.com](mailto:contact@osseotouch.com)

